

Figure-2 Results of capillary sequencing in chromatogram showing BCR-ABL fusion transcripts. A. Fusion of Exon 6 of BCR gene and Exon 2 of ABL gene. B. Fusion of Exon 3 of ABL gene and Exon 13 of BCR gene.

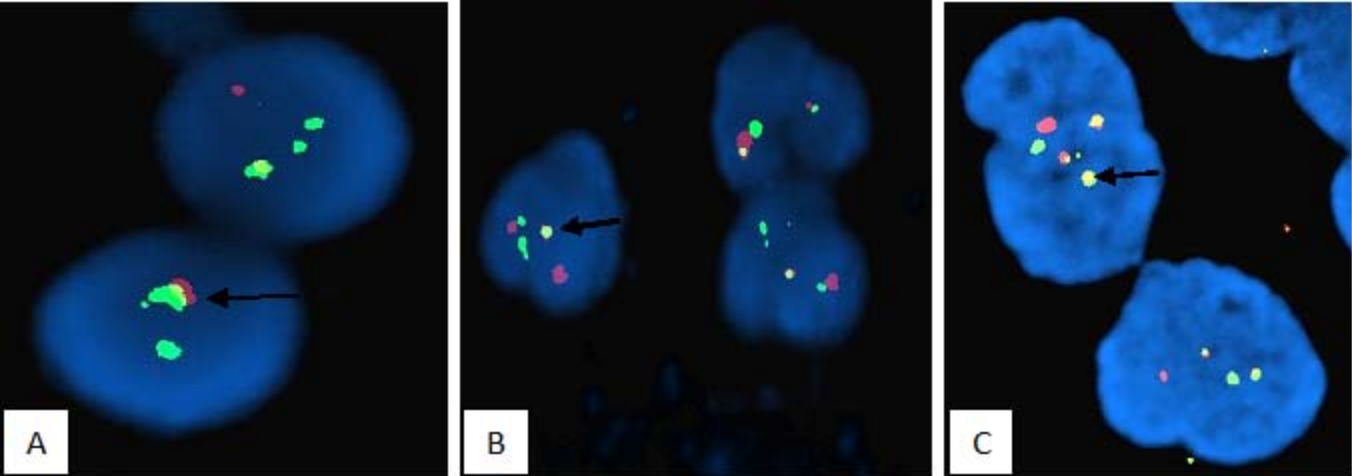


Figure 3.

Detection of *BCR-ABL*-t(9;22) using FISH. The arrow mark shows the fusion signal which indicates the presence of *BCR-ABL* and *TEL-AML1* **A.** e6a2 *BCR-ABL* fusion **B.** e13a3 *BCR-ABL* fusion **C.** e5a3 *TEL-AML1* fusion.